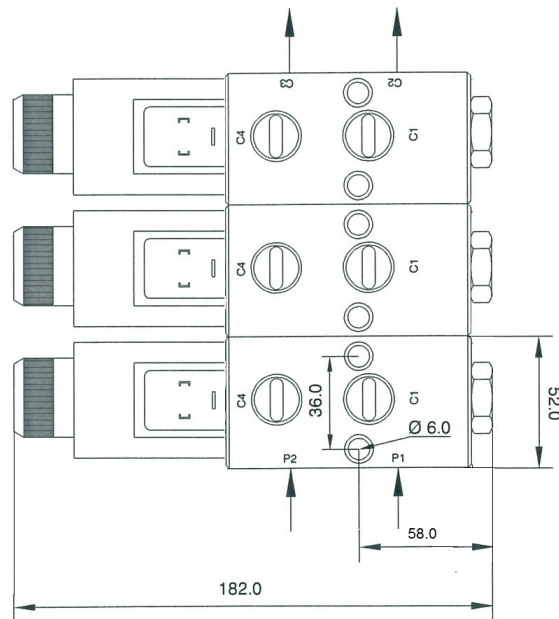
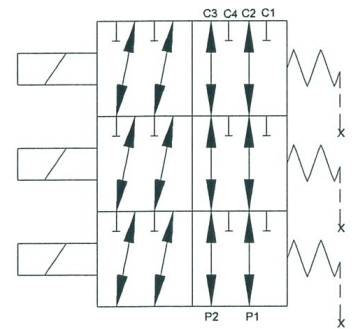
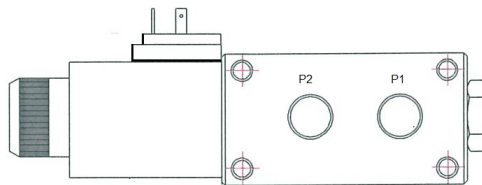
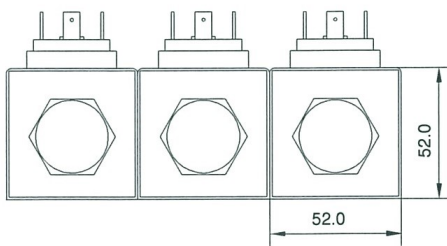


Solenoid Solenoid controlled 6/2 directional control valve R3/8", M18x1.5R3/8", M18x1.5



VOLTAGE	
12 VDC	
24 VDC	

Model	Threaded coupling	Flow l/min	Max. pres. bar.
E6238Y	R 3/8"	40	210
E62M18Y	M18x1.5	40	210