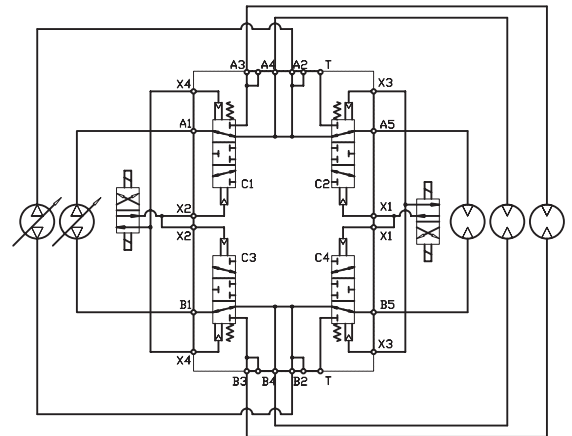
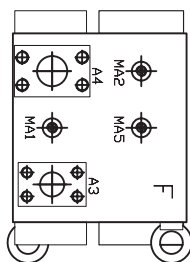
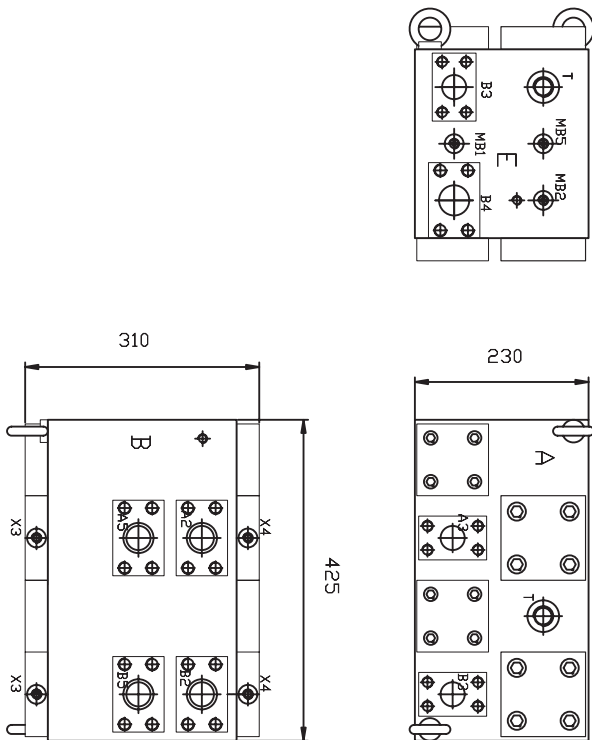


Suuntaventtiili 4x3/2 R1½"

1000L 350 bar



Side A:
A3 and B3 500 Lpm SAE 11/4" 6000 PSI
T 50 Lpm 3/4" BSP

Side B:
A2 and B2 500 Lpm SAE 11/2" 6000 PSI
A5 and B5 800 Lpm SAE 11/2" 6000 PSI
X1 and X3 1/4" BSP Pilot Pressure

Side D:
A1 and B1 500 Lpm SAE 11/2" 6000 PSI
A4 and B4 1000 Lpm SAE 11/2" 6000 PSI
X2 and X4 1/4" BSP Pilot Pressure
MA3 and MB3 1/4" BSP Measuring Ports

Side E:
MB1, MB2 and MB5 1/4" BSP Measuring Ports
B3 SAE 11/4" 6000 PSI
B4 SAE 11/2" 6000 PSI
T 3/4" BSP Plugged

Side F:
MA1, MA2 and MA5 1/4" BSP Measuring Ports
A3 SAE 11/4" 6000 PSI
A4 SAE 11/2" 6000 PSI

Working Pressure 350 bar
Pilot Pressure 30 bar.