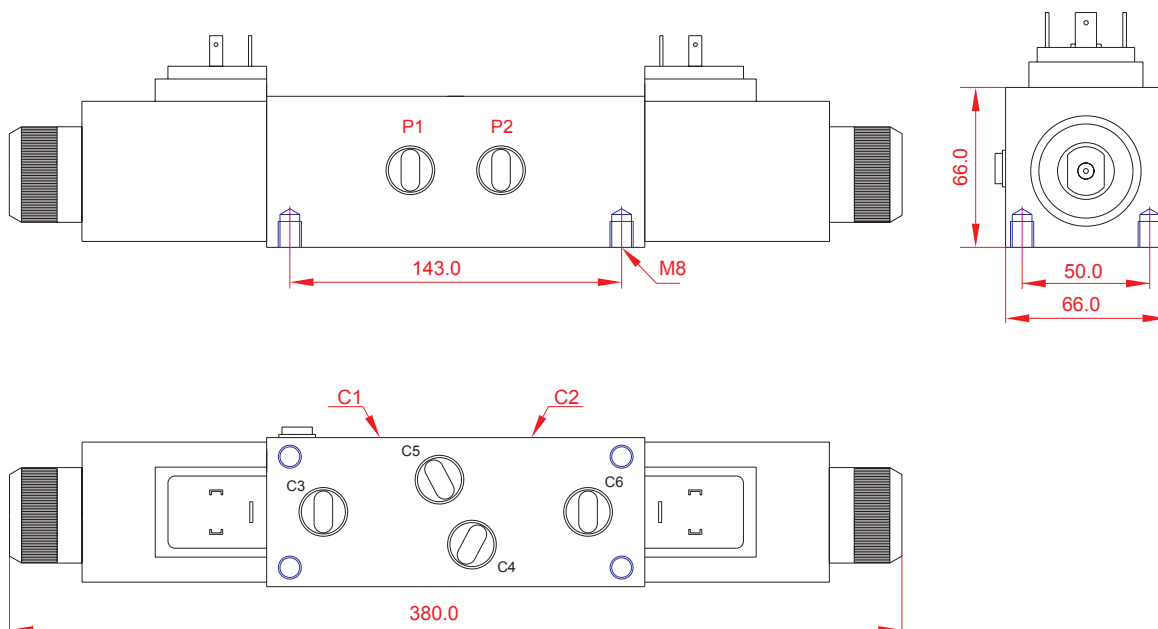
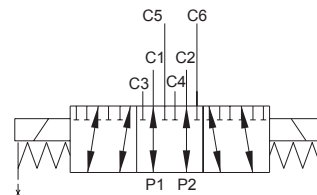


# Solenoid controlled 8/3 directional control valve R1/2", 3/4", M22x1.5, M27x2.0



VOLTAGE	
12 VDC	
24 VDC	

Model	Threaded coupling	Flow l/min	Max. pres. bar.
E8312	R 1/2"	75	210
E8334	R 3/4"	85	210
E83M22	M22x1.5	75	210
E83M27	M27x2.0	85	210